

How to setup

Apple's Time Capsule

in your Microsoft Windows™ based Small Business or Home Office

A step-by-step guide to installing Apple's Time Capsule in your
Microsoft Windows™ environment.

Guy Moss

Copyright Material
Version 2.0

Apple™, Time Capsule™, Microsoft™, Windows™ and other software and hardware manufacturers are trademarks of their respective products.

"This has been an amazing answer to many many months of prayer (literally).

I couldn't see the time capsule as a drive on my daughters XP laptop and she had maxed her hard drive (how many random pics does a kid need?????). I had no idea what 'mapping a drive' was but your instructions made it a walk in the park. Problem solved and money saved not having to buy her a Mac. Thanx!"

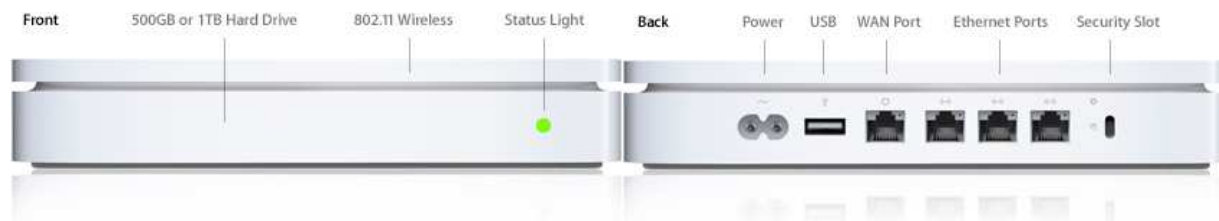
-Ef

Table of Contents

Apple Time Capsule – an overview.....	3
Apple Time Capsule Specifications:	3
Apple Time Capsule requirements for Windows PC's:	3
Installing Time Capsule the first time	4
Configure Time Capsule to use your IP Addressing	Error! Bookmark not defined.
Internet connection via the WAN Port	Error! Bookmark not defined.
Setting up the Time Capsule Hard disk.....	Error! Bookmark not defined.
Centralized printing via the USB Port	Error! Bookmark not defined.
Bonjour.....	Error! Bookmark not defined.
Connect wireless Windows PC's	Error! Bookmark not defined.
Support options:	Error! Bookmark not defined.
Other articles in our Apple_Windows series:	Error! Bookmark not defined.
Foreverwarm Consulting.....	Error! Bookmark not defined.

Apple Time Capsule – an overview

Apple's Time Capsule is backup device that includes a Router, Wireless Access Point (WAP), Printer sharing, and Disk Sharing so that backups can occur from your computers directly to this device. Although built for Macs, it can be used just as effectively with Windows based laptops and computers.



(Picture courtesy Apple Inc)

Apple Time Capsule Specifications:

- 1Tb or 2Tb hard disk
- USB port
- Gigabit WAN port
- 3 Gigabit LAN ports
- 802.11n wireless
- Airport(tm) Wireless Access Point (WAP)
- Bonjour software
- (full specs [here](#))
- [Firmware update 7.4.2](#)

Apple Time Capsule requirements for Windows PC's:

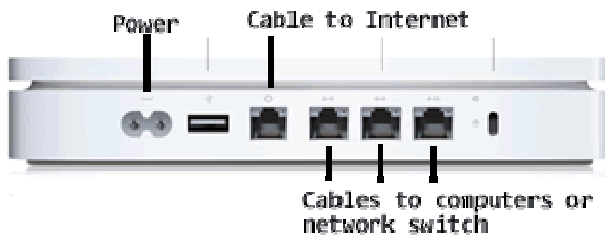
- PC with Windows XP SP3 or Windows Vista SP1, ([download XP SP3](#), [download Vista SP1](#))
- CD drive
- Network or wireless networking capability (802.11a, 802.11b, or 802.11g wireless card) A Gigabit network card will certainly be your best option
- USB printer if you want to share your printer
- Apple Airport Utility (included on the CD)
- Bonjour for Windows (included on the CD)

Installing Time Capsule the first time

Here are Step-by-Step instructions for setting up Time Capsule in your Windows environment. The screen shots and instructions are Windows XP based however they apply to Vista and Windows 7 environments as well. These instructions are as if you've just taken the Time Capsule out of the box and set it up for the first time.

Cabling

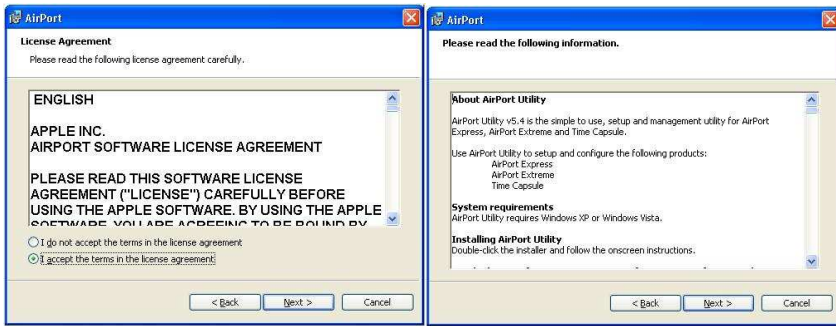
Plug in your network cables first, then the power cable. There is no on/off switch as this device is meant to be always on.



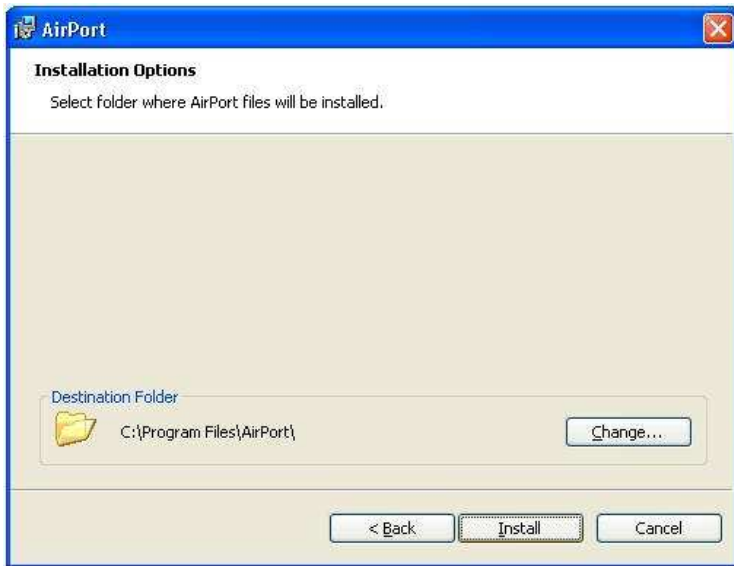
Once the Time Capsule is powered up, insert the CD that came with your Time Capsule and you will see the Airport setup screen. Click next.



Accept the license agreement and the information window.



Select where you want the files to be installed. C:\Program Files\Airport is the default and unless you have a reason to change this, simply click Next



At this last screen you can click Finish

